

V O L V O



Volvo Excavators 54.8-56.7 t 340 kW

EC550

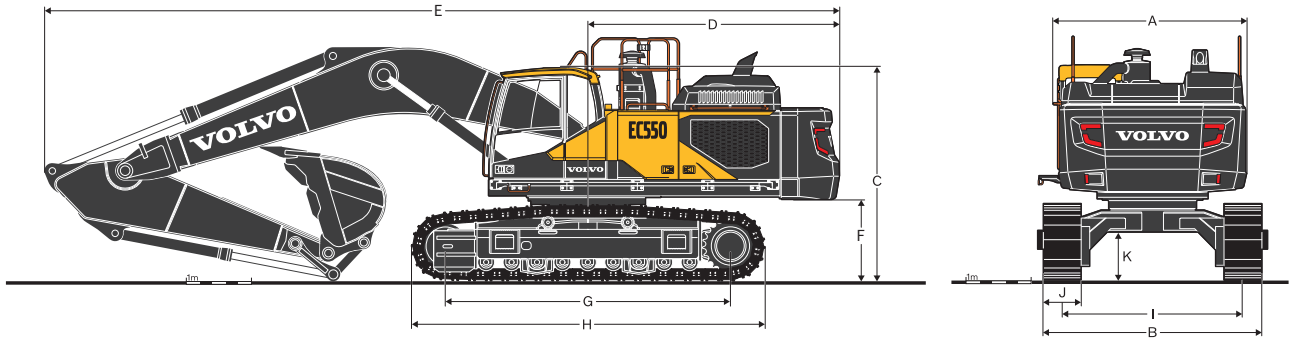
Volvo Construction Equipment

Specifications

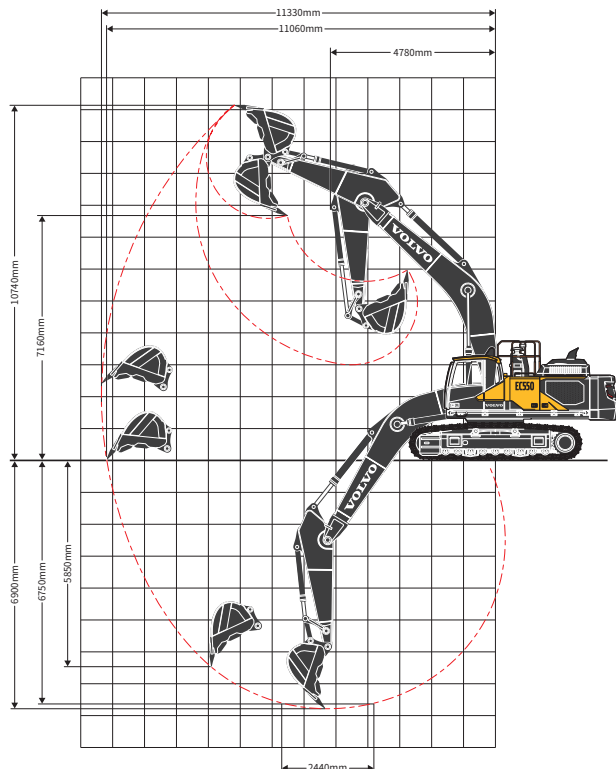
KEY PERFORMANCE

Engine		
Engine	Volvo	D13J
Max. power at	r/min	1 600
Net, ISO 9249/SAE J1349	kW	339
Gross, ISO 14396/SAE J1995	kW	340
Max. torque	Nm	2 200
at engine speed	r/min	1 300
Hydraulic system		
Max. flow	l/min	2x416
Relief valve setting pressure		
Implement	MPa	33.8/36.3
Travel circuit	MPa	33.8
Swing circuit	MPa	27.9
Travel system		
Max. tractive force	kN	350
Max. travel speed (low/high)	km/h	3.5/5.4
Gradeability	°	35
Swing system		
Max. swing speed	r/min	9.4
Max. swing torque	kNm	197

Service Refill		
Fuel tank	l	680
DEF/AdBlue® tank	l	62.5
Hydraulic system, total	l	590
Hydraulic tank	l	270
Engine oil	l	55
Engine coolant	l	66
Swing reduction unit	l	2 x 6.4
Travel reduction unit	l	2 x 8
Operating weight		
Boom length	m	6.5
Arm length	m	3.0
Bucket capacity	m³	3.0-4.0
Shoe width	mm	600
Operating weight	Kg	55000
Max. Digging Force (ISO)		
Breakout force (bucket)	kN	329
Tearout force (arm)	kN	250



WORKING RANGES



DIMENSIONS

Description	Unit	EC550 Wide retractable undercarriage
Boom	m	6.5
Arm	m	3.0
A. Overall width of upper structure**	mm	2 990
B. Overall width (retracted)	mm	3 400
Overall width (extended)	mm	3 900
C. Overall height*		
Cab	mm	3 415
Overall height of boom	mm	4 340
D. Tail swing radius	mm	3 880
E. Overall length	mm	11 760
F. Counterweight clearance*	mm	1 370
G. Tumbler length	mm	4 515
H. Track length	mm	5 580
I. Track gauge (retracted)	mm	2 800
Track gauge (extended)	mm	3 300
J. Shoe width	mm	600
K. Min. ground clearance*	mm	735

* Without shoe grouser

** Excluding walkway, handrail

V O L V O

Volvo Construction Equipment

沃尔沃建筑设备投资(中国)有限公司

中国上海市浦东新区金京路2095号 邮编:201206

电话:+86 21 3131 9888 传真:+86 21 3131 9666 中文网站:www.volvoce.com.cn

全国统一客服专线: 4000-525-168



微信公众号



沃尔沃APP