

V O L V O



国四

Volvo Excavators 20.0-21.2 t 129 kW

**EW205**

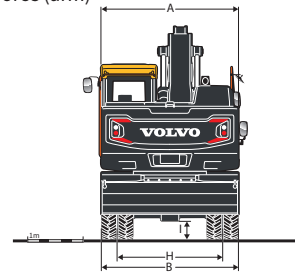
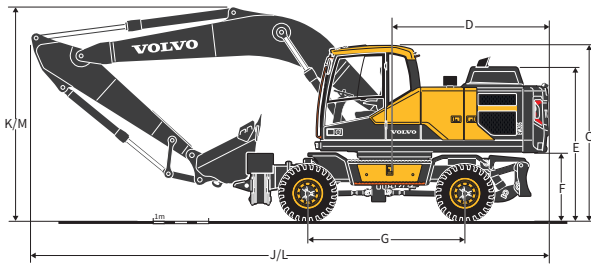
Volvo Construction Equipment

# Specifications

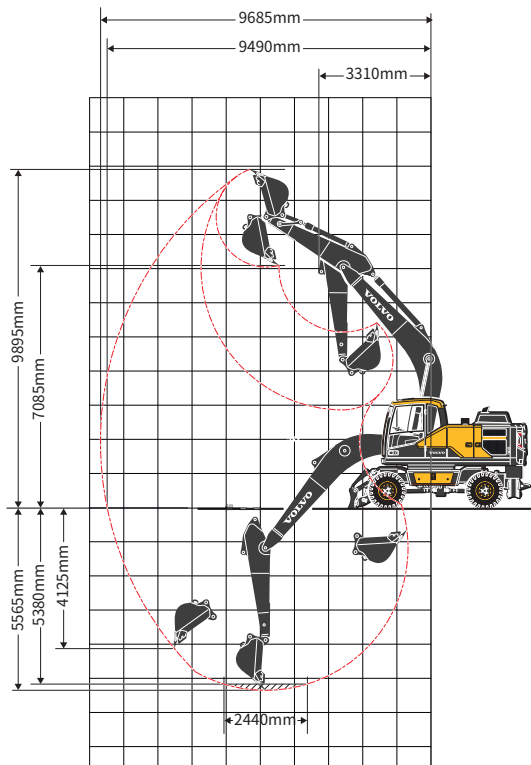
## KEY PERFORMANCE

Engine		
Engine	Volvo	D6J
Max. power at	r/min	2 000
Net (ISO9249/SAEJ1349)	kW	128
Gross (ISO 14396/SAE J1995)	kW	129
Max. torque	Nm	850
at engine speed	r/min	1 350
Hydraulic system		
Max. flow	l/min	2 x 230
Relief valve setting pressure		
Implement	MPa	32.4 / 34.3
Travel system	MPa	34.3
Swing system	MPa	27.9
Travel system		
Tractive force (net)	kN	108.9
Travel speed (on road/off road/creep)	km/h	36/9/3.5
Swing system		
Max. swing speed	r/min	11.8
Max. swing torque	kNm	83

Service Refill		
Fuel tank	l	300
DEF/AdBlue® tank	l	25
Hydraulic system, total	l	335
Hydraulic tank	l	148
Engine oil	l	25
Engine coolant	l	30.4
Swing reduction unit	l	7
Transmission	l	2.5
Axle differential:		
Front axle	l	11
Rear axle	l	11
Final drive	l	4 x 2.5
Operating weight		
Boom length	m	5.65
Arm length	m	2.7
Bucket capacity	m <sup>3</sup>	0.86
Tire type		10.00-20 18PR
Operating weight	Kg	20 000
Max. Digging Force (ISO)		
Breakout force (bucket)	kN	144
Tearout force (arm)	kN	109



## WORKING RANGES



## DIMENSIONS

Description	Unit	EW205
Boom	m	5.65
Arm	m	2.7
A. Overall width of upper structure	mm	2 500
B. Overall width	mm	2 500
C. Overall height of cab	mm	3 180
D. Tail swing radius	mm	2 800
E. Overall height of engine hood	mm	2 790
F. Counterweight clearance*	mm	1 255
G. Wheel base	mm	2 850
H. Tread width	mm	1 914
I. Min. ground clearance*	mm	337
J. Overall length (travel position)	mm	9 390
K. Overall height of boom (travel position)	mm	3 960
L. Overall length (transportation position)	mm	9 510
M. Overall height of boom (transportation position)	mm	3 185

**V O L V O**

**Volvo Construction Equipment**

沃尔沃建筑设备投资(中国)有限公司

中国上海市浦东新区金京路2095号 邮编:201206

电话:+86 21 3131 9888 传真:+86 21 3131 9666 中文网站:www.volvoce.com.cn

全国统一客服专线: 4000-525-168



微信公众号



沃尔沃APP